



ABC On-Country Carbon

Sustainable Agriculture Model



ABC
Foundation

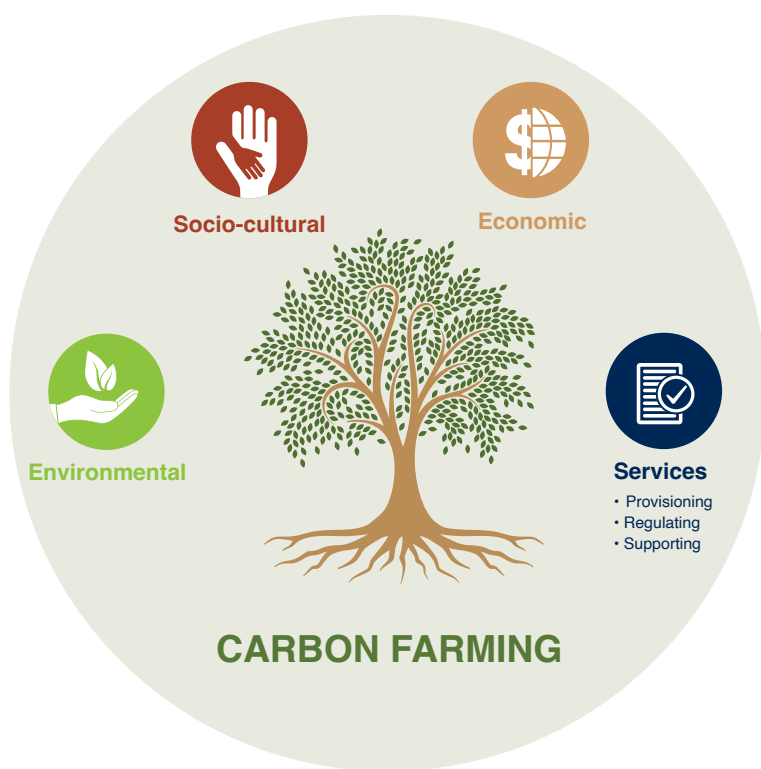
On-Country
CARBON

On Country For Country



Carbon Farming

Carbon Farming is simply farming in a way that reduces Greenhouse Gas emissions or captures and holds carbon in vegetation and soils. It is managing land, water, plants and animals to meet the Triple Challenge of Landscape Restoration, Climate Change and Food Security. It seeks to reduce emissions in its production processes, while increasing production and sequestering carbon in the landscape.



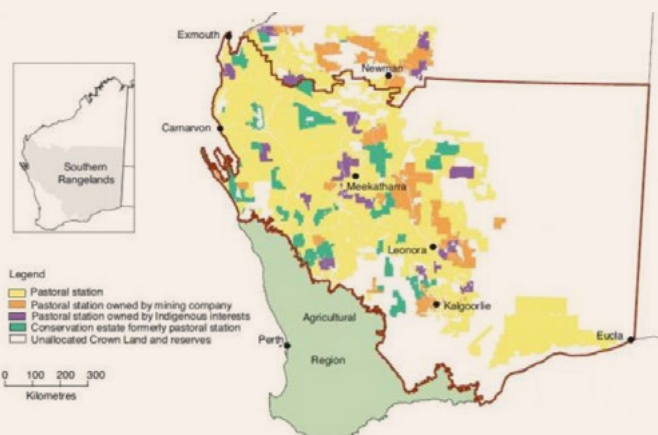
ABC Partnership Opportunities

-  Sustainable Herd Management, & total grazing management support
-  Sharing Knowledge and expertise in diversifying income e.g. in Horticulture, Bush Foods and Tourism
-  Carbon Ranger Programs e.g. fire management
-  Access to regional Social and Environmental Benefit Programs
-  Access to up front capital to support carbon infrastructure projects

Target Market

Aboriginal and Non-Aboriginal Pastoral Leases

- Southern Rangelands
- Other WA regions

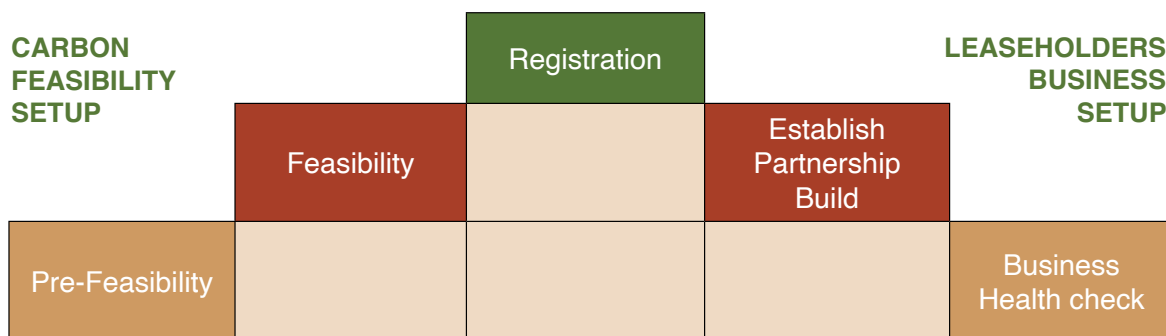




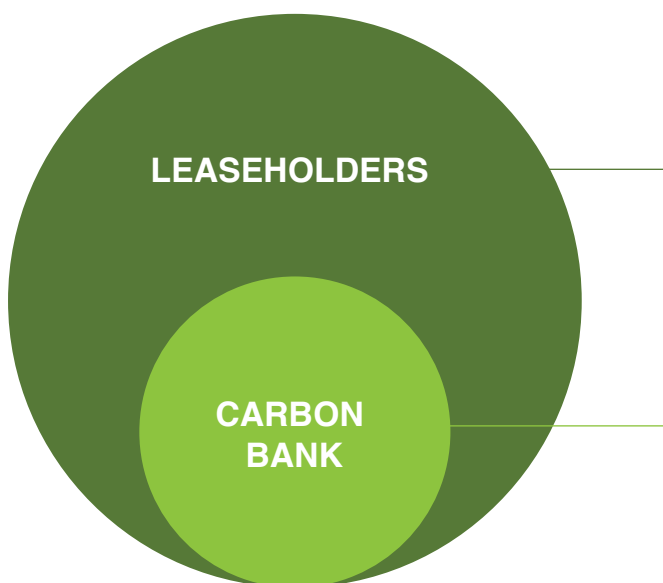
Our Approach

Human Inducted Regeneration (HIR)

We recognise that HIR Carbon Farming is new in Western Australia and leaseholders want to be well information about how it can benefit them. Our aim is to work in partnership to increase the leaseholders knowledge and maximise its opportunities through income diversification. Our dual action approach includes undertaking both a carbon feasibility assessment and set up and to work with the leaseholders to ensure they are business ready, accessing available support services with the ability to adapt our model to be place-specific.



Our On-Country Carbon Model



Lease or sub-leaseholder receives revenue to manage Country, revenue provides the following opportunities:

- Carbon / Station Management Obligations
- Capacity building / knowledge transfer services
- Infrastructure Development (Financing Options)
- Training and Employment Outcomes

Covers costs and opens opportunities:

- Carbon Model Pricing & Assessments
- Carbon Reporting / Compliance Obligations
- Member Social and Environmental Benefit Programs
- Risk Mitigation Strategy
- Capital Financing/Leveraging (Social Impact/DGR)
- Funds to ABC On-Country Impact



If you want to know more about On-Country Carbon, let's chat!

POSTAL ADDRESS

PO Box 310
Carnarvon
WA 6701

CONTACT

On-Country team
admin@abcau.com.au

Media Enquiries:

oncountry@abcau.com.au

www.abcau.com.au

